

ORDINANCE NO. 03 - 17

AN ORDINANCE ACCEPTING A BID  
FOR CONSTRUCTION OF PARK AVENUE

WHEREAS; the Village of Chatham sought and obtained bids for the construction of a roadway Park Avenue from Spruce Street east approximately 2100 feet; and

WHEREAS, the bids where opened on April 15, 2003 at 8:30 a.m. and the lowest responsible bidder was identified, see attached bid tabulation; and

WHEREAS, the Public Works Committee met to review said bids and is recommending the lowest bid from Perry Broughton Trucking & Excavating Inc. for \$145,848.21.

NOW THEREFORE, BE IT ORDAINED by the President and Board of Trustees of the Village of Chatham, Sangamon County, Illinois as follows:

Section 1: That the bid from Perry Broughton Trucking & Excavating Inc. is hereby accepted.

Section 2: That the appropriate officials be and are hereby directed to sign the necessary forms.

Section 3: This Ordinance shall be in full force and effect from and after its passage and approval as provided by law.

Passed this 22<sup>nd</sup> day of April, 2003 at a Regular meeting of the Board of Trustees

Ayes: 6 HERR, MADAMS, BOYLE, MC CARTHY, MC ERATH, DIERKING

Nays: 0

Absent: 0

Thomas S. Gray  
Thomas S. Gray, President  
Village of Chatham

ATTEST: Pat Schad  
Pat Schad, Clerk



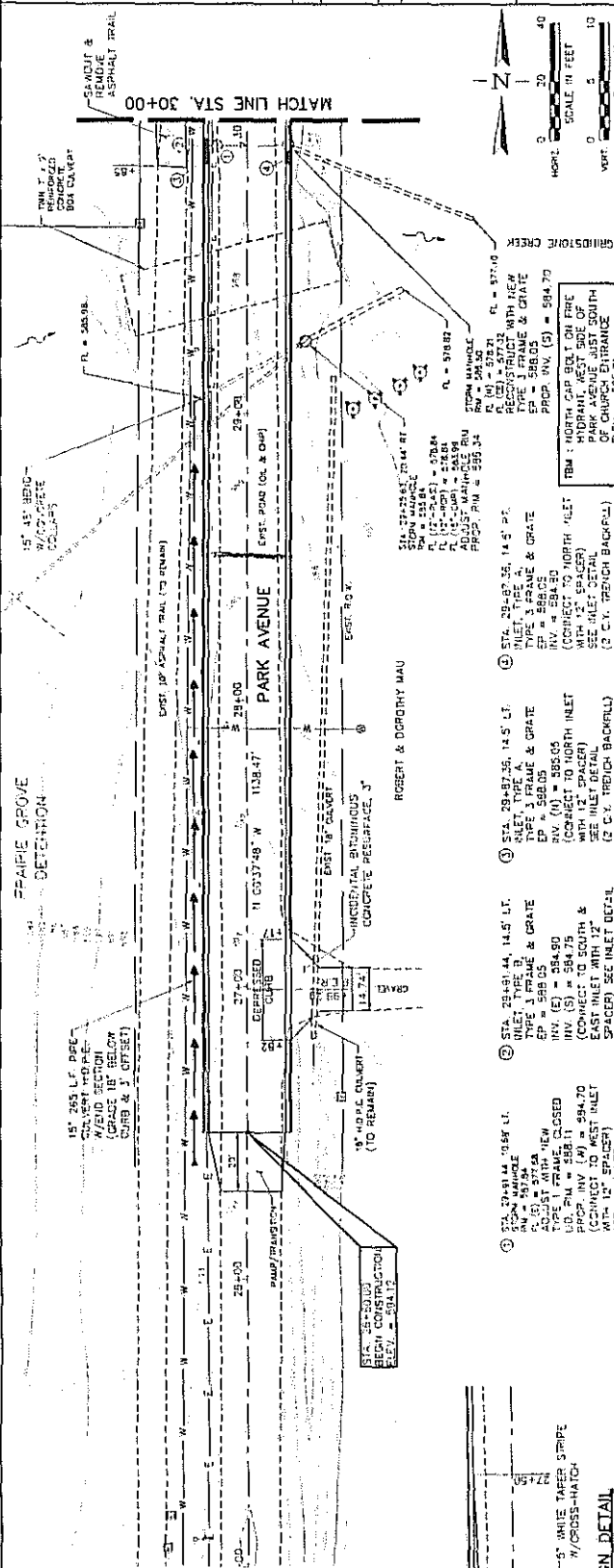
**BID TABULATIONS**

ENGINEER'S ESTIMATE Perry Broughton Trucking & Illinois Valley Paving Co. Merrill's Contractors, Inc. Truman L. Flatt & Sons  
Excavating Inc.

PROJECT: Village of Chatham - Park Avenue Extension  
DATE: Tuesday, April 15, 2003 TIME: 8:30 a.m. JOB NO. 02337

	DESCRIPTION	QUANTITY	UNIT	UNIT PRICE	TOTAL PRICE	UNIT PRICE	TOTAL PRICE	UNIT PRICE	TOTAL PRICE	UNIT PRICE	TOTAL PRICE	UNIT PRICE	TOTAL PRICE
1	Borrow Excavation (from Breckenridge)	965	C.Y.	\$9.00	\$8,685.00	\$12.25	\$11,821.25	\$15.20	\$14,668.00	\$20.57	\$19,850.05	\$5.25	\$5,066.25
2	Earth Excavation	400	C.Y.	\$8.00	\$3,200.00	\$14.65	\$5,860.00	\$13.35	\$5,340.00	\$21.20	\$8,480.00	\$26.00	\$10,400.00
3	Bituminous Materials (Prime Coat)	1033	GAL	\$1.00	\$1,033.00	\$0.01	\$10.33	\$2.59	\$2,675.47	\$2.61	\$2,696.13	\$1.70	\$1,756.10
4	Aggregate (Prime Coat)	7	TON	\$30.00	\$210.00	\$0.01	\$0.07	\$0.01	\$0.07	\$78.18	\$547.26	\$0.01	\$0.07
5	Agg. Base Course Widening, 8" Ty. A	600	TON	\$17.00	\$10,200.00	\$21.50	\$12,900.00	\$34.62	\$20,772.00	\$35.09	\$21,054.00	\$22.50	\$13,500.00
6	Bit. Conc. Binder Course, Superpave, N50	555	TON	\$50.00	\$27,750.00	\$50.23	\$27,877.65	\$56.90	\$31,579.50	\$54.07	\$30,008.85	\$55.00	\$30,525.00
7	Bit. Conc. Surf, Cse, Superpave, Mix C, N50	555	TON	\$45.00	\$24,975.00	\$50.54	\$28,049.70	\$50.01	\$33,305.55	\$53.33	\$29,598.15	\$58.00	\$32,190.00
8	Traffic Control, Complete	1	LS	\$5,000.00	\$5,000.00	\$4,500.00	\$4,500.00	\$3,488.78	\$3,488.78	\$7,403.88	\$7,403.88	\$14,800.00	\$14,800.00
9	Adjust Manhole Rim	1	EA	\$500.00	\$500.00	\$300.00	\$300.00	\$555.70	\$555.70	\$391.60	\$391.60	\$360.00	\$360.00
10	Valves to be Adjusted	3	EA	\$200.00	\$600.00	\$150.00	\$450.00	\$119.07	\$357.21	\$220.85	\$662.55	\$130.00	\$390.00
11	Inlets to be Reconstruction, 3' Dia., w/ New Type 3 Frame & Grate	3	EA	\$400.00	\$1,200.00	\$696.20	\$2,088.60	\$1,550.98	\$4,652.94	\$659.72	\$1,679.16	\$725.00	\$2,175.00
12	Remove & Relocate Existing Signs	2	EA	\$100.00	\$200.00	\$80.00	\$160.00	\$233.80	\$467.60	\$136.98	\$273.96	\$115.00	\$230.00
13	Adjust Inlet w/ New Type 1 F. & CL	1	EA	\$200.00	\$200.00	\$450.20	\$450.20	\$850.30	\$850.30	\$593.89	\$593.89	\$660.00	\$660.00
14	15" 45 Degree Bend (Conc.) with Concrete Collars	1	EA	\$200.00	\$200.00	\$460.00	\$460.00	\$745.90	\$745.90	\$583.24	\$583.24	\$495.00	\$495.00
15	Aggregate Surface Course, Type B	30	TON	\$15.00	\$450.00	\$32.05	\$961.50	\$153.12	\$4,593.60	\$32.98	\$989.40	\$26.75	\$802.50
16	Trench Backfill	16	C.Y.	\$22.00	\$352.00	\$24.56	\$392.96	\$3.59	\$57.44	\$33.91	\$542.56	\$17.25	\$276.00
17	Pipe Culverts, Type 1, 15" H.D.P.E. w/ 15" End Section	265	L.F.	\$16.00	\$4,240.00	\$22.57	\$5,981.05	\$40.06	\$10,615.90	\$21.41	\$5,673.65	\$24.00	\$6,360.00
18	Storm Sewers, Type 1, RCCP, 12"	34	L.F.	\$28.00	\$952.00	\$29.30	\$996.20	\$56.49	\$1,920.66	\$35.26	\$1,198.84	\$34.90	\$1,186.60
19	Rem. Exist. Rim & Reconst. w/ Ty. 3 F&G	1	EA	\$250.00	\$250.00	\$750.00	\$750.00	\$1,550.99	\$1,550.99	\$765.61	\$765.61	\$713.00	\$713.00
20	Rem. Exist. Grate & Repl w/ Ty. 1 F & CL	1	EA	\$450.00	\$450.00	\$435.00	\$435.00	\$850.30	\$850.30	\$518.89	\$518.89	\$688.00	\$688.00
21	Inlet, Ty. A, Ty. 3 Frame & Grate	3	EA	\$500.00	\$1,500.00	\$695.00	\$2,085.00	\$1,795.93	\$5,387.79	\$702.06	\$2,106.18	\$720.00	\$2,160.00
22	Inlet, Ty. B, Ty. 3 Frame & Grate	1	EA	\$500.00	\$500.00	\$890.00	\$890.00	\$2,217.13	\$2,217.13	\$919.36	\$919.36	\$920.00	\$920.00
23	Set Over Inlet, Ty. B, Ty. 3 F & G	2	EA	\$600.00	\$1,200.00	\$945.00	\$1,890.00	\$2,168.08	\$4,336.16	\$950.62	\$1,901.24	\$925.00	\$1,850.00
24	Concrete Curb & Gutter, Type B-6, 18"	3100	L.F.	\$12.00	\$37,200.00	\$16.30	\$50,580.00	\$16.09	\$49,879.00	\$15.35	\$47,585.00	\$13.00	\$40,300.00
25	P.C.C. Driveway, 6"	100	S.Y.	\$35.00	\$3,500.00	\$42.06	\$4,206.00	\$73.58	\$7,358.00	\$57.83	\$5,783.00	\$52.00	\$5,200.00
26	P.C.C. Sidewalk, 4"	2718	S.F.	\$3.00	\$8,154.00	\$3.95	\$10,736.10	\$5.28	\$14,351.04	\$4.40	\$11,959.20	\$4.45	\$12,095.10
27	Incidental Bituminous Concrete Surfacing	77	TON	\$85.00	\$6,545.00	\$115.46	\$8,890.42	\$149.44	\$11,506.88	\$53.33	\$4,106.41	\$96.00	\$7,392.00
28	Paint Pavement Marking Line, 5" & Sign	1	L.S.	\$800.00	\$800.00	\$242.00	\$242.00	\$818.19	\$818.19	\$562.50	\$562.50	\$630.00	\$630.00
29	Seeding, Class 2 (Special)	1	AC	\$2,000.00	\$2,000.00	\$2,600.00	\$2,600.00	\$2,440.54	\$2,440.54	\$3,000.00	\$3,000.00	\$2,640.00	\$2,640.00
30	Asphalt Removal	132	S.Y.	\$6.00	\$792.00	\$4.60	\$607.20	\$26.11	\$3,446.52	\$7.44	\$982.08	\$7.40	\$976.80
<b>GRAND TOTALS AS READ</b>							\$187,121.23		\$240,789.16		\$212,416.64		\$196,737.42
<b>AS CORRECTED</b>					\$152,838.00		\$187,121.23		\$240,789.16		\$212,416.64		\$196,737.42

\* bid was opened after bid opening. Bid was found in Jay Jessen's mailbox located at front desk. The bid was delivered on 4/14/03 at 4:00 pm



STATION	VERTICAL ELEVATION	VERTICAL CURVE DATA	PROPOSED PROFILE GRADE	EXISTING PROFILE GRADE
565	565.00			
566	566.00			
567	567.00			
568	568.00			
569	569.00			
570	570.00			
571	571.00			
572	572.00			
573	573.00			
574	574.00			
575	575.00			
576	576.00			
577	577.00			
578	578.00			
579	579.00			
580	580.00			
581	581.00			
582	582.00			
583	583.00			
584	584.00			
585	585.00			
586	586.00			
587	587.00			
588	588.00			
589	589.00			
590	590.00			
591	591.00			
592	592.00			
593	593.00			
594	594.00			
595	595.00			
596	596.00			
597	597.00			
598	598.00			
599	599.00			
600	600.00			
601	601.00			
602	602.00			
603	603.00			
604	604.00			
605	605.00			
606	606.00			
607	607.00			
608	608.00			
609	609.00			
610	610.00			
611	611.00			
612	612.00			
613	613.00			
614	614.00			
615	615.00			

PAGER (SEE NOTE)  
 DETAIL  
 FIGURES 1 & 2, 2 & 3 SHALL INSTALL A 12\"/>